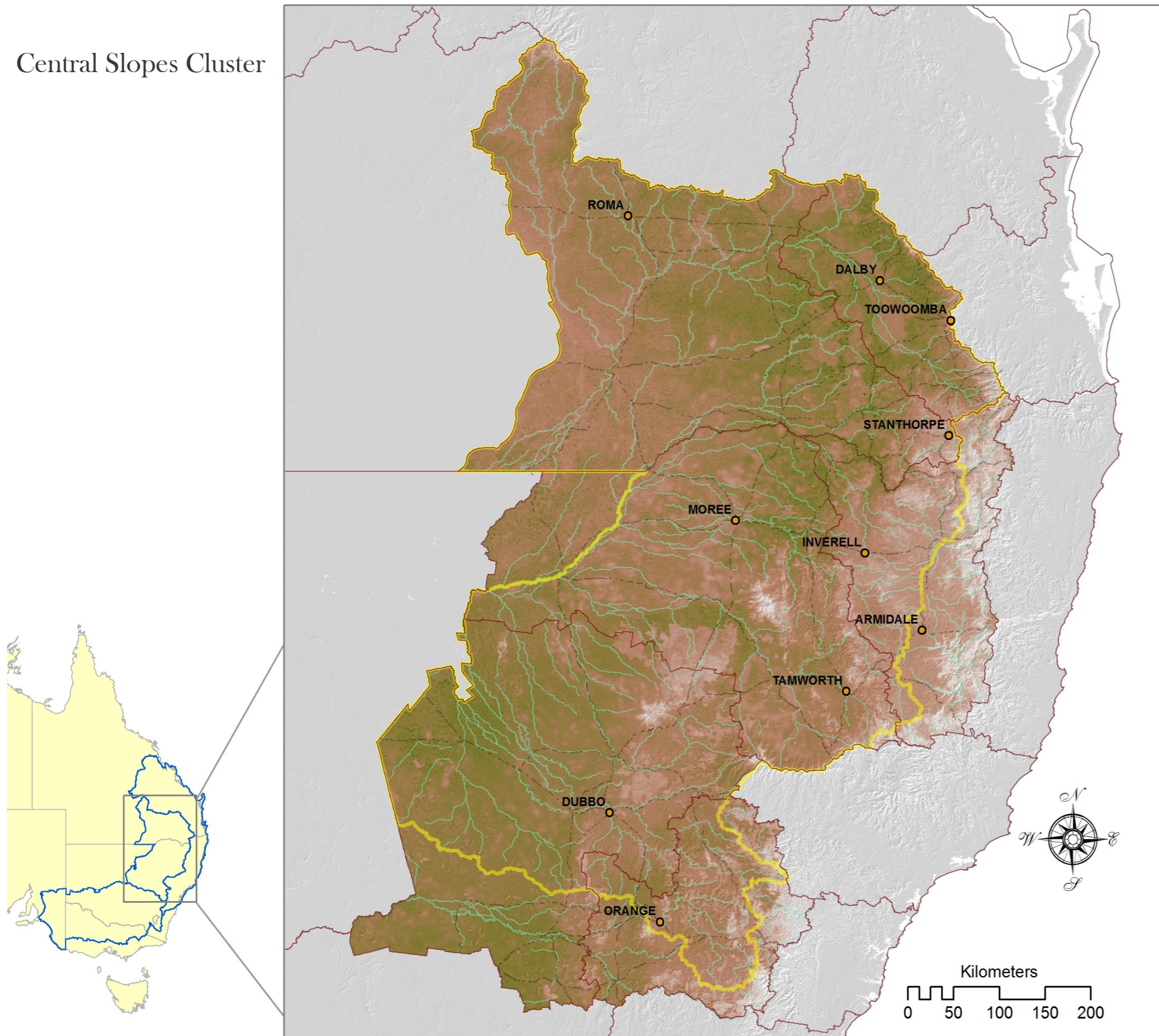


Biodiversity climate adaptation

Revegetation Benefits 1990-2050

Central Slopes Cluster



SUMMARY

Revegetation benefits are based on the principle of maximising representation of pre-clearing native vegetation communities through revegetation in areas that are expected to become suitable for target communities by 2050. Rates of loss used to weight the importance of communities are based on past clearing, degradation and fragmentation, as well as future contractions, expansions and shifts of bioclimatic envelopes due to climate change. Expected future distributions of bioclimatic class envelopes were derived by averaging the impacts of three climate projections (MPI, CAN and MIROC) each at RCP 4.5 and 8.5.

LEGEND

Revegetation Benefits



- East Coast, Central Slopes & Murray Basin Clusters
- NRM Boundaries
- Central Slopes Cluster
- Cities
- Major Rivers
- Principal Roads

Models and map production by OEH NSW; GDM compositional turnover modelling by CSIRO Ecosystem Sciences, with funding from the Australian government.



An Australian Government Initiative



Office of Environment & Heritage



UNIVERSITY OF SOUTHERN QUEENSLAND

