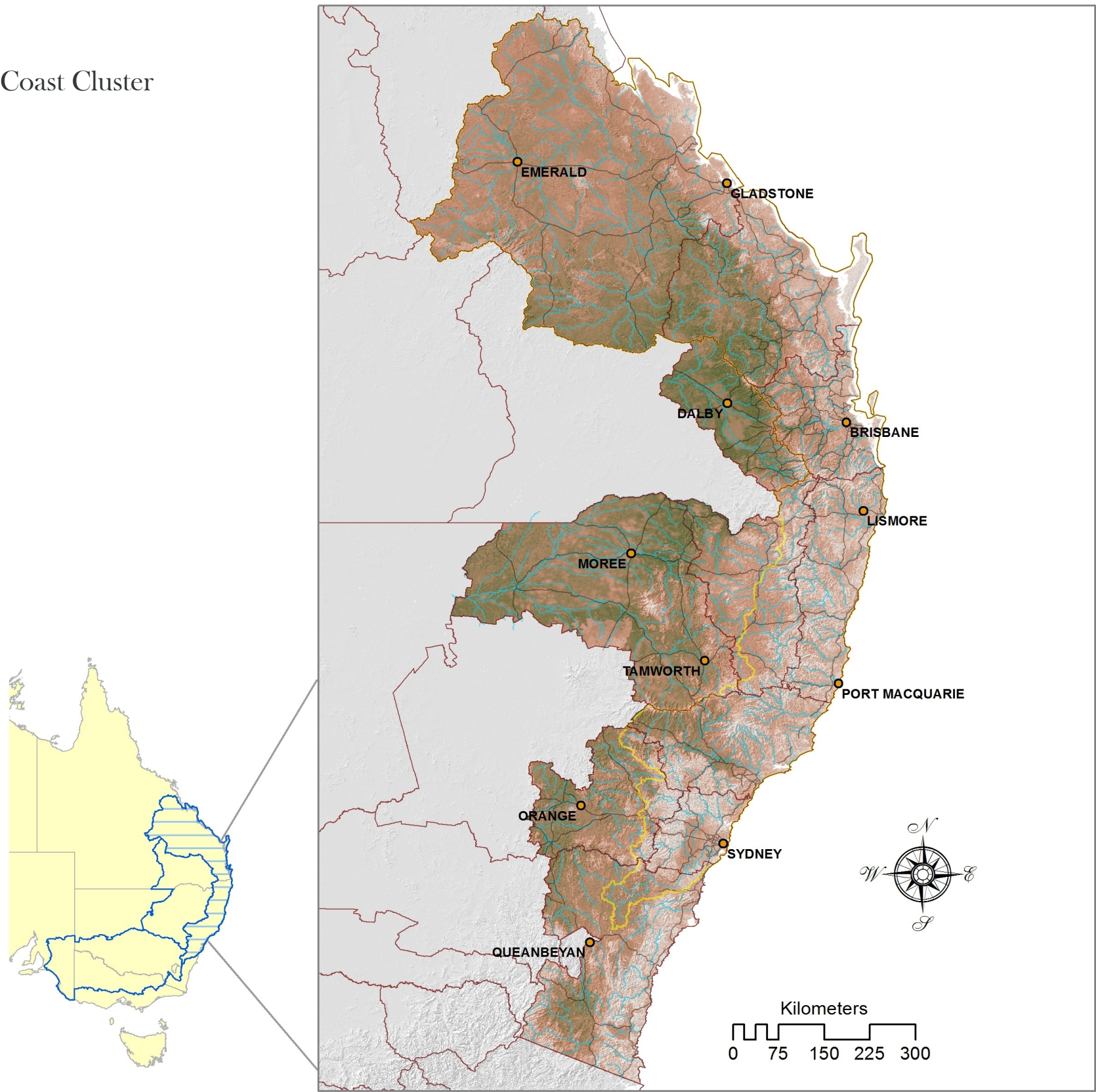


Biodiversity climate adaptation

Revegetation Benefits 1990-2050

East Coast Cluster



SUMMARY

Revegetation benefits are based on the principle of maximising representation of pre-clearing native vegetation communities through revegetation in areas that are expected to become suitable for target communities by 2050. Rates of loss used to weight the importance of communities are based on past clearing, degradation and fragmentation, as well as future contractions, expansions and shifts of bioclimatic envelopes due to climate change. Expected future distributions of bioclimatic class envelopes were derived by averaging the impacts of three climate projections (MPI, CAN and MIROC) each at RCP 4.5 and 8.5 .

LEGEND

- Revegetation Benefits
- HIGH

LOW
- East Coast, Central Slopes & Murray Basin Clusters

NRM Boundaries

East Coast Cluster

Cities

Major Rivers

Principal Roads

Models and map production by OEH NSW; GDM compositional turnover modelling by CSIRO Ecosystem Sciences, with funding from the Australian government.