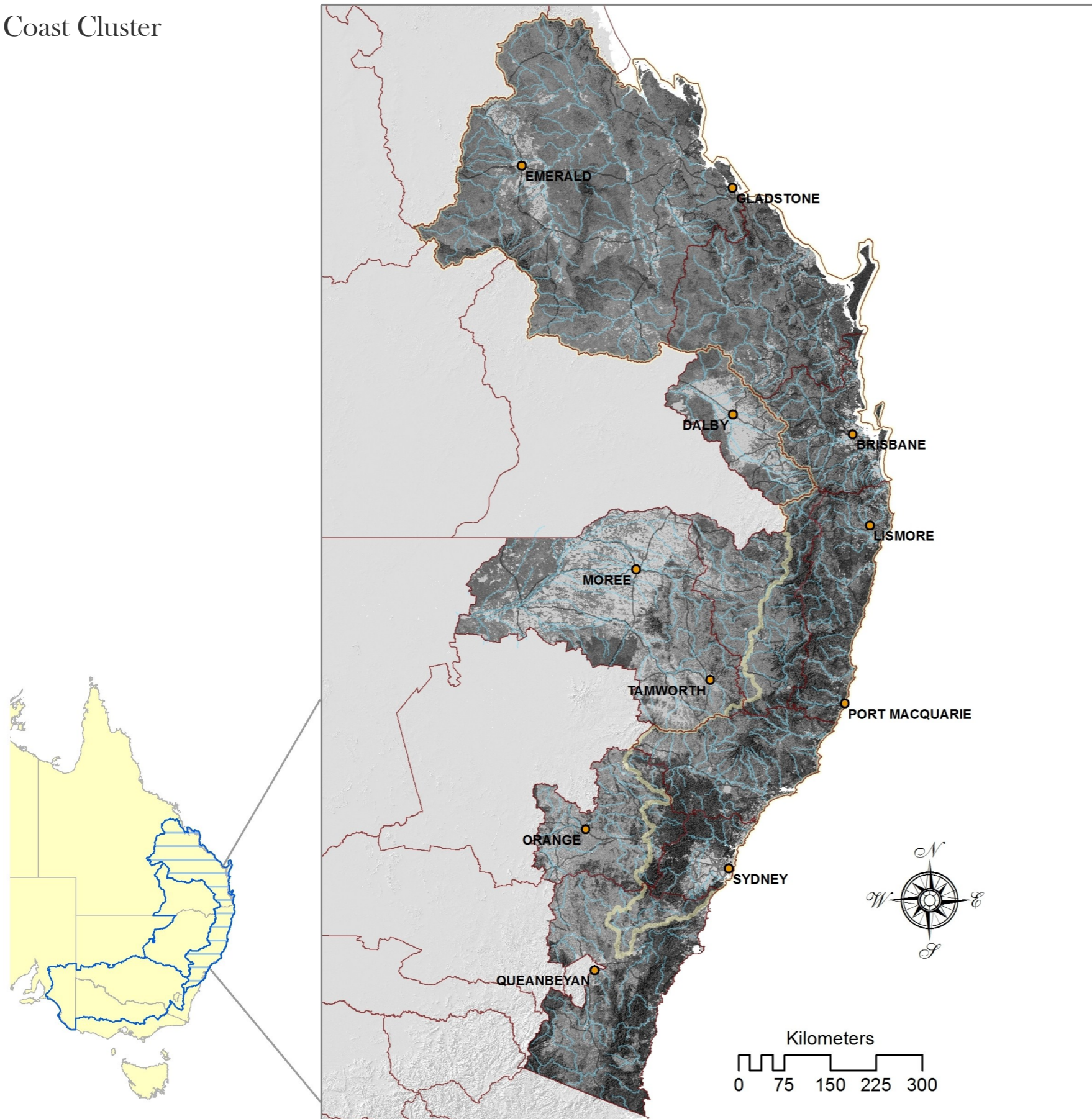


Biodiversity climate adaptation

Vegetation condition 2014

East Coast Cluster



SUMMARY

Vegetation Condition is a relative measure of how much of the original, pre-clearing biodiversity each location is capable of supporting at this time (2014). With climate change species distributions are expected to change, challenging the assumptions underlying this view. However, areas that are in good condition now possess enhanced resilience that will allow smooth transitions to new states, driven by climate change. Good condition areas also facilitate species movements leading to successful range-shifts.

The Vegetation Condition model was developed by combining satellite imagery with other spatial layers such as landuse and vegetation type mapping.

LEGEND

Vegetation Condition

HIGH

LOW

- East Coast, Central Slopes & Murray Basin Clusters
- NRM Boundaries
- East Coast Cluster
- Cities
- Major Rivers
- Principal Roads

Model and map production by OEH NSW;



An Australian Government Initiative



Office of Environment & Heritage

