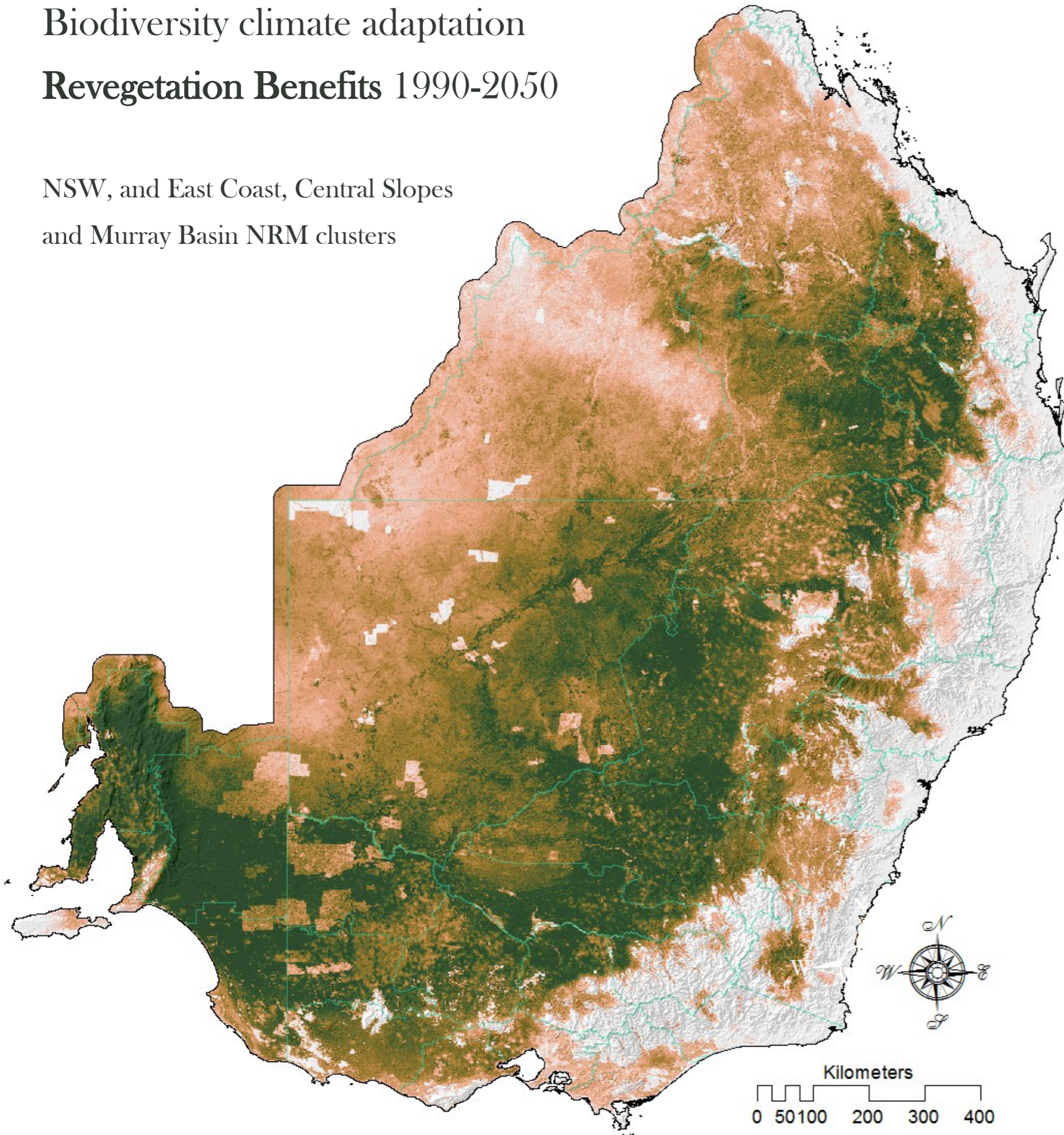


# Biodiversity climate adaptation

## Revegetation Benefits 1990-2050

NSW, and East Coast, Central Slopes and Murray Basin NRM clusters



### SUMMARY

Revegetation benefits are based on the principle of maximising representation of pre-clearing native vegetation communities through revegetation in areas that are expected to become suitable for target communities by 2050. Rates of loss used to weight the importance of communities are based on past clearing, degradation and fragmentation, as well as future contractions, expansions and shifts of bioclimatic envelopes due to climate change. Expected future distributions of bioclimatic class envelopes were derived by averaging the impacts of three climate projections (MPI, CAN and MIROC) each at RCP 4.5 and 8.5.

#### LEGEND

Revegetation Benefits

HIGH

LOW

NRM

Boundaries

Models and map production by OEH NSW; GDM compositional turnover modelling by CSIRO Ecosystem Sciences, with funding from the Australian government.



An Australian Government Initiative



Office of Environment & Heritage

