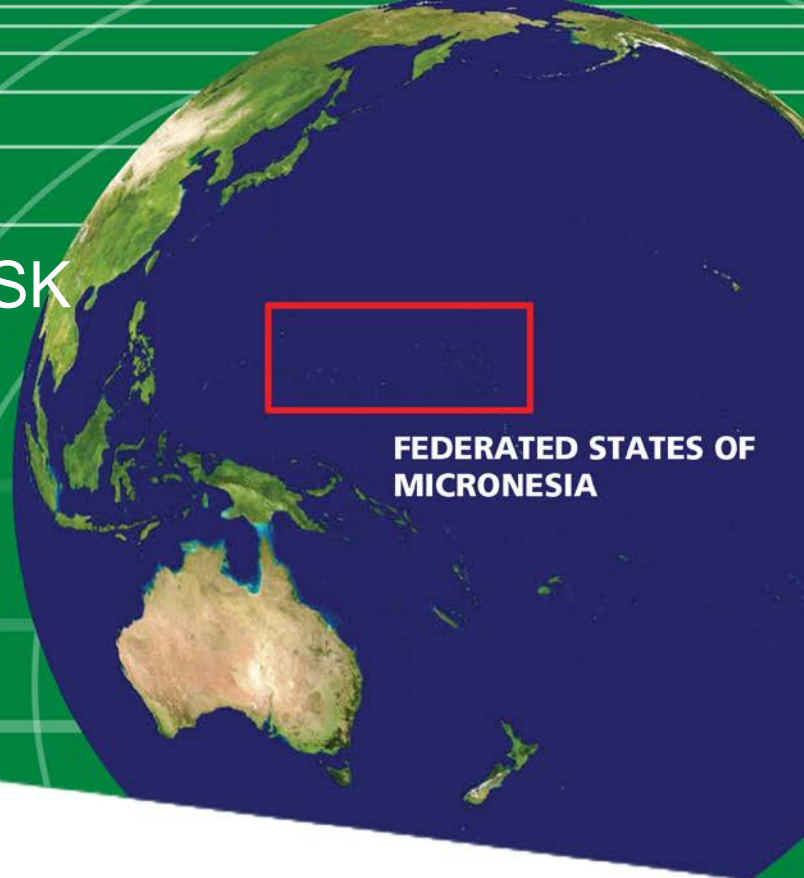


CURRENT AND FUTURE TROPICAL CYCLONE RISK IN THE SOUTH PACIFIC



FEDERATED STATES OF
MICRONESIA

COUNTRY RISK PROFILE: FEDERATED STATES OF MICRONESIA

JUNE 2013

- *The Federated States of Micronesia has been affected by devastating tropical cyclones several times during the past few decades, e.g. 2002 tropical cyclones Mitag and Chataan. The current climate average annual loss due to tropical cyclones represents about 2.8% of the country's GDP.*
- *Future climate projections indicate that there is a general increase in future losses from tropical cyclones compared to the current climate. By end-of-century average annual losses are projected to increase from 8.0 million USD to 8.4 million USD, an increase of 4.8% (2010 dollars).*
- *By 2100, larger increases in losses are projected for more extreme events (> 50 year return period). Losses from 1-in-50 year tropical cyclones could increase by as much as 59% in the worst case climate change scenario.*
- *By end-of-century, the proportion of the population affected by future tropical cyclones is projected to increase slightly compared to the current climate.*
- *The main contributor to current and future building and infrastructure losses is wind, with only minor contributions from storm surge and flood.*
- *Maximum wind speeds produced by tropical cyclones in the Federated States of Micronesia are projected to increase slightly by end-of-century.*

Pacific Catastrophe Risk Assessment and Financing Initiative
in collaboration with
Pacific-Australia Climate Change Science and Adaptation Planning Program



PROJECT GOAL

Contributing to the third phase of the Pacific Catastrophe Risk Assessment and Financing Initiative (PCRAFI), this project is supported by the Pacific-Australia Climate Change Science and Adaptation Planning (PACCSAP) Program with co-financing from the Global Fund for Disaster Risk Reduction. The primary goal of the project is to improve understanding of the risks posed by tropical cyclone hazards (winds, floods, and storm surge) to key assets in the Pacific region, under current and future climate scenarios. A clearer understanding of the current level of risk in financial terms - and the way that risk will change in the future - will aid decision makers in prioritising adaptation measures for issues such as land-use zoning, urban infrastructure planning, and ex-ante disaster planning.

EXPOSURE AND POPULATION

The building assets considered in this study include residential, commercial, public, and industrial buildings, while the infrastructure assets include major ports, airports, power plants, bridges and roads. The major crops in the country are coconut, cassava, sweet potato, and banana, among others.

Table 1: Summary of Population and Exposure in the Federated States of Micronesia (2010)

Total Population	112,000
GDP Per Capita (USD)	2,570
Total GDP (million USD)	287.4
Total Number of Buildings	31,988
Number of Residential Buildings	28,226
Number of Public Buildings	1,257
Number of Commercial, Industrial, Other Buildings	2,505
Hectares of Major Crops	7,729

As estimated and detailed in the previous phase of the project, the replacement value of all assets in the Federated States of Micronesia is 2.0 billion USD of which about 84% represents buildings and 15% represents infrastructure. This study did not take into account future economic or population growth. Table 1 includes a summary of the population and exposure in the islands.

AIR TROPICAL CYCLONE MODEL

AIR has developed a South Pacific catastrophe parametric model to evaluate the tropical cyclone risk for 15 countries in the region. Historical data was used to build a stochastic catalogue of more than 400,000 simulated tropical cyclones, grouped in 10,000 potential realisations of the following year's activity in the basin. The catalogue provides a long-term view of tropical cyclone activity in the region. It was built to physically and statistically reflect the most credible view of current risk based on the historical record, including frequency, intensity and track evolution. The model estimates hazard (wind speeds and flooding levels) and damage (losses) for all events in the catalogue.

CURRENT CLIMATE

The Federated States of Micronesia are located just north of the equator in an area known for the frequent occurrence of tropical cyclones with damaging winds, rains, and storm surge. The country has been affected by devastating tropical cyclones several times during the past few decades. For example, tropical cyclone Mitag in 2002 caused one fatality, devastated food crops, destroyed buildings and caused 150 million USD in losses, the highest recorded amount for any cyclone in the country. Less than half a year later, tropical cyclone Chataan struck Chuuk State with intense rain, causing floods as well as major landslides that killed 47 and injured over 100 people.

The country's current tropical cyclone risk profile has been derived from an estimation of the direct losses to buildings, infrastructure, and major crops, as caused by wind and flooding due to rain and storm surge. 'Losses' in this report refers to the direct costs needed to repair or replace damaged assets *plus* the emergency costs that governments may sustain as a result of providing necessary relief and recovery efforts (e.g. debris removal, setting up shelters for those made homeless, or supplying medicine and food).

The average expected losses per calendar year are referred to as the *Average Annual Loss* or AAL (see Appendix). The current climate AAL value is 8.0 million USD. The percentage distribution for the different assets considered is shown in Figure 1.

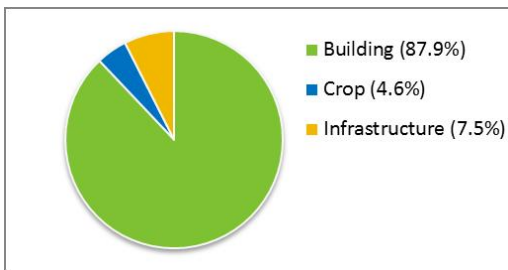


Figure 1: Contribution to total Average Annual Loss (AAL) from the three types of assets considered

The model also estimates losses from more stronger and more damaging tropical cyclones, such as 50, 100, and 250 year return period (RP) events (see Appendix). The current losses from such events are: 73.1 million USD (50 year RP), 150.9 million USD (100 year RP) and 284.3 million USD (250 year RP), respectively.

FUTURE CLIMATE

As part of the project, Geoscience Australia (GA) analysed general circulation model outputs from a total of 11 Global Climate Models (GCMs), from two successive generations of GCM experiments referred to as CMIP3 and CMIP5. The models in the two frameworks are forced by different emission scenarios: the A2 scenario¹ for CMIP3 models and the RCP 8.5 scenario² for CMIP5 models. Both A2 and RCP 8.5 represent high emission scenarios.

Results from the latest generation CMIP5 models, for which no dynamical downscaling was required, indicate that these models tend to perform better at replicating the behaviour of tropical cyclones in the current climate, especially for the Southern Hemisphere. Thus, more confidence should be placed in the results from the CMIP5 framework. The below results are based on the CMIP5 models.

The Mean Estimate reflects results obtained after averaging output over all five models under the same climate framework. Figure 2 displays the relative frequencies for different storm categories, for both current and Mean Estimate future climates.

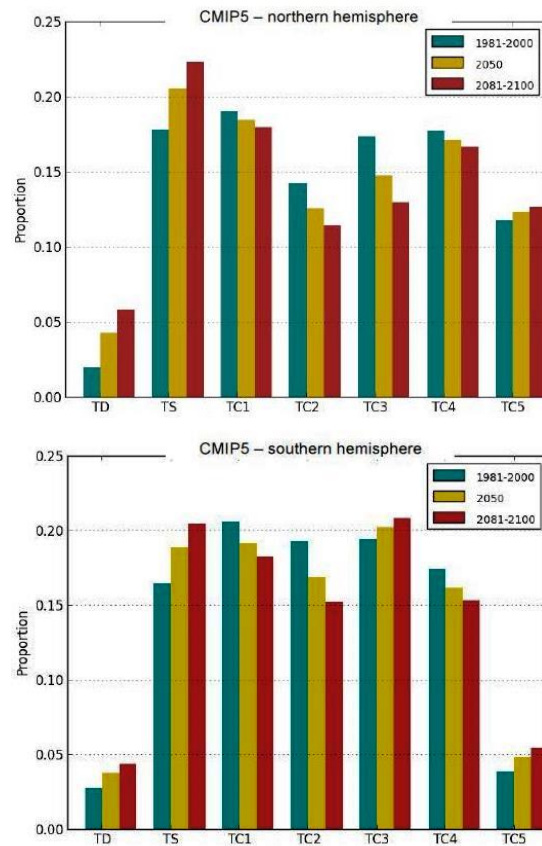


Figure 2: Mean Estimate relative proportion of TC intensity – multi model ensemble for CMIP5 models in the Northern and Southern Hemispheres. Classification is based on central pressure using a Cp-based Saffir-Simpson Hurricane Intensity Scale

For both hemispheres, there is an expected future increase in the relative frequency of tropical depressions, tropical storms, and category 5 storms (and category 3 storms in the southern hemisphere), and a general decrease in the number of storms in the other categories. Most notable is the increase in category 5 storms which may have a measurable impact on observed losses in the region. There is also a slight equatorward movement of tropical cyclone tracks in the northern hemisphere and poleward movement of tropical cyclone tracks in the southern hemisphere.

Future loss projections

Of the five individual models analysed, generally two models suggest large increases in losses, one model suggests decreases in losses and two models show

¹<http://www.ipcc.ch/ipccreports/sres/emission/index.php?idp=98>
²<http://link.springer.com/content/pdf/10.1007%2Fs10584-011-0148-z.pdf>

relatively small changes when compared to the current climate losses. The significant divergence in the individual model results indicates a large range of model estimates. Figure 3 shows the end-of-century individual model projection Exceedance Probability (EP – see Appendix) curves (blue curves) along with the current climate EP-curve (green curve).

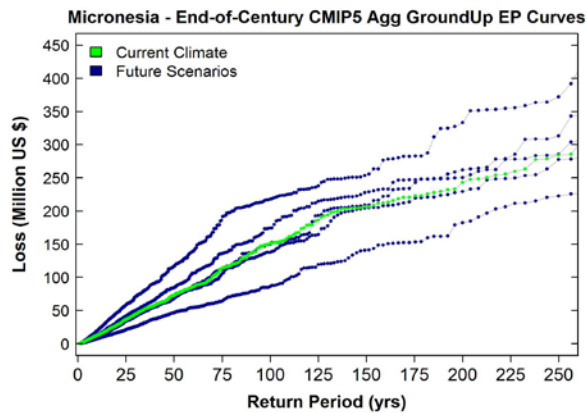


Figure 3: End-of-century EP-curves for individual CMIP5 models compared to the current climate EP-curve (green curve)

Any analysis of future model projections should consider estimates of the ensemble mean (the 'Mean Estimate' of all models), the full range of model results, and the worst case climate change scenario. The individual model that projects the greatest increase in losses as compared to the current climate defines the worst case scenario for the country.

In general, there is an increase in losses projected from tropical cyclones for the future climate. Figure 4 contrasts the end-of-century Mean Estimate projection with the current climate. Except for very high frequency events, the two curves reveal consistent increases in future losses. Lower frequency events (> 50 year return period) are projected to observe larger increases in losses in the future climate.

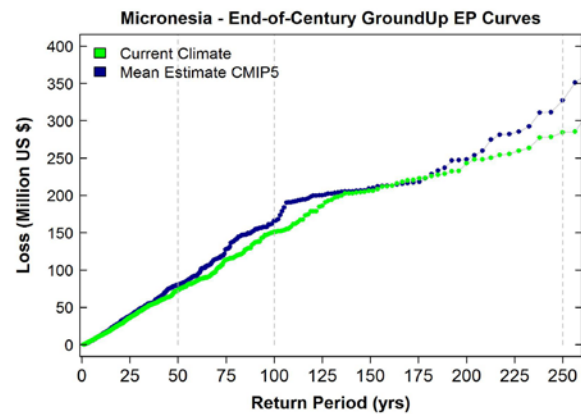


Figure 4: End-of-century EP-curve for the future Mean Estimate (blue curve) compared to the current climate EP-curve (green curve)

Mean Estimate projections indicate that, by end-of-century, losses from a 1-in-50-year event will increase by 9.2% compared to the current climate, while the worst case scenario (most upper curve in Figure 3) suggests a more significant increase in loss of 59.1%. For more extreme (one-in-250 year) events the Mean Estimate projection indicates an increase in losses of 15.1%, while the worst case climate change scenario shows an increase in losses of 30.8%.

Table 2: Loss estimates (USD) for current climate and future end-of-century Mean Estimate and worst case scenario

CMIP5 (Total Loss)	AAL	50yr RP	100yr RP	250yr RP
Current Climate	8,010,055	73,112,660	150,970,901	284,262,849
Future Mean Estimate	8,391,831	79,839,674	166,000,706	327,279,340
Future Worst Case	11,357,858	116,356,442	217,626,298	371,871,446

Table 2 contrasts current climate losses with the future Mean Estimate and worst case climate change scenario estimate across different return periods. The worst case scenario consistently projects significant loss increases when compared to the current climate across all return periods considered as well as the AAL.

Mid-century v end-of-century future loss projections by different assets

The modeling of tropical cyclones under a future climate generally indicates an increase in Mean Estimate future losses compared to the current climate. The total AAL increases from 8.0 million USD to 8.1 million USD by mid-century and 8.4 million USD

by end-of-century, an increase of 1.7% and 4.8%, respectively.

Table 3 contrasts the AAL and the 50, 100, and 250 year RP losses from current and future climates, for both 2050 and 2100 time periods, across the different assets at risk. The total loss (AAL) represents the sum of the building, infrastructure, and crop AALs.

Larger end-of-century loss increases occur for buildings and infrastructure while small decreases are observed for crops, across different return periods. More people are likely to be affected (in terms of fatalities and casualties) by end-of-century tropical cyclone risk than under the current climate.

Note that no adjustment to account for future economic or population growth was considered for any of the assets.

Table 3: Percent changes between future climate loss projections for mid-century and end-of-century, and the baseline, for different return periods, by different assets. Baseline loss numbers are expressed in USD

Mean Estimate		AAL	50yr RP	100yr RP	250yr RP
Total Loss	Current Climate	8,010,055	73,112,660	150,970,901	284,262,849
	Future 2050 (%)	+1.7	-8.7	+1.5	+20.7
	Future 2100 (%)	+4.8	+9.2	+10.0	+15.1
Building	Current Climate	7,041,148	67,598,100	141,902,891	271,102,169
	Future 2050 (%)	+2.7	-8.4	+3.0	+22.5
	Future 2100 (%)	+5.8	+9.4	+10.7	+18.0
Infrastructure	Current Climate	371,446	3,462,549	6,348,160	13,830,001
	Future 2050 (%)	-5.1	+1.1	-7.7	-2.3
	Future 2100 (%)	+6.1	+5.2	+13.1	+7.7
Crop	Current Climate	597,461	2,078,783	2,367,190	2,766,807
	Future 2050 (%)	-5.4	-1.1	-0.8	-1.0
	Future 2100 (%)	-8.0	-0.5	-2.7	-4.0
Population Affected	Current Climate	15	153	280	444
	Future 2050 (%)	-0.2	-5.2	+1.4	+13.1
	Future 2100 (%)	+3.4	+8.5	+7.1	+9.0

Wind, flood and surge contributions to total loss estimates

The analysis captures the effects of three hazards associated with tropical cyclones: strong winds, precipitation-induced flooding, and coastal flooding due to storm surge. Tropical cyclone winds can be very destructive and in most cases they are the main cause of damage and subsequent losses.

Unlike the wind, which decreases in intensity as the storm moves inland, the intensity of storm-related precipitation and accumulated runoff can increase in inland regions and consequently also lead to significant damage to property.

The storm surge represents the sea water forced ashore due to the rise in sea level accompanying any approaching intense storm. A significant storm surge event can have devastating effects on-shore. Both sea level and precipitation changes under future climates are not considered in this study.

The main contributor to building and infrastructure loss is wind, with only minor contributions from surge and flood. Figure 5 explores the *relative changes* in contributions to total loss split by hazard between the current and the Mean Estimate future climate.

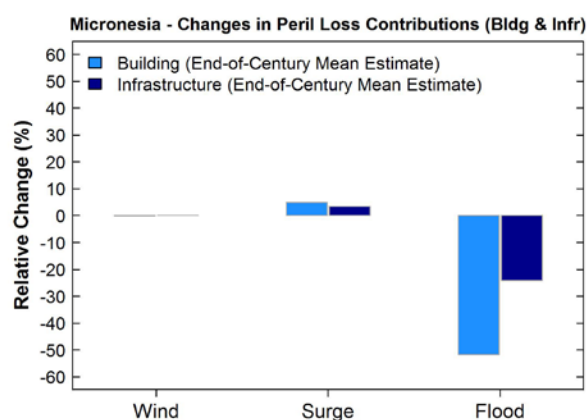


Figure 5: Percent changes between the end-of-century future climate and the current climate for Wind, Surge and Flood loss contributions to total loss, for buildings (light blue) and infrastructure (dark blue)

The future climate projects a decrease in the flood contribution to total loss for both buildings and infrastructure and a small change for storm surge. However, it is important to note that the reported changes for flood and storm surge are calculated between very small initial numbers and, ultimately, wind remains the main contributor to total loss for both assets.

Wind hazard maps for end-of-century climate compared to current climate

The wind hazard increases slightly for the 100 year return period under future climate, as shown in Figure 6. The 100 year return period winds, which represent an event that has a 40% chance of being equalled or exceeded once in 50 years, are capable of generating severe damage to buildings, infrastructure, and crops with consequent large economic losses.

Figure 6 depicts the end-of-century 100 year mean RP wind speed, expressed as maximum 1-minute sustained winds in km/h, for the current climate (top panel) and future projection (bottom panel).

For example, in Palikir (central Pohnpei), the 100 year RP wind speed increases from 149.4 km/hr to 154.9 km/hr by end-of-century.

The wind level changes are less dramatic than the changes in total losses, because a small change in wind speed can result in significantly larger damage costs.

The current climate wind patterns in the Federated States of Micronesia are generally maintained across the islands under future climate projections.

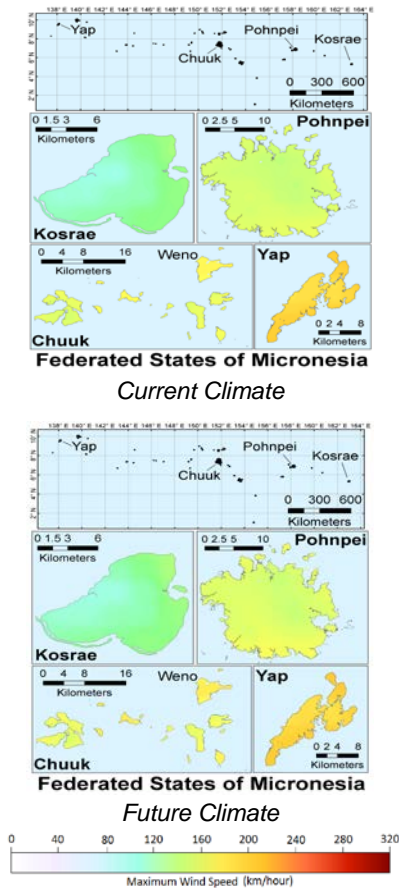


Figure 6: 100 year mean return period winds (maximum 1-minute sustained winds in km/h) for the current climate (top panel) and the future climate (bottom panel)

SUMMARY

The evaluation of the current and future climate tropical cyclone risk in the South Pacific region was carried out using Geoscience Australia's analysis of tropical cyclone activity along with AIR's catastrophe model developed specifically for the region. The risk model allows for the translation of the climate change induced effects observed in the frequency, intensity, and path of tropical cyclones into direct loss results for the region and individual countries.

For both hemispheres, numerical models predict a future increase in the relative frequency of tropical depressions, tropical storms, and category 5 storms, and a general decrease in the number of storms in the other categories (Figure 2). Most notable is the regional increase in category 5 storms.

The financial impacts are measured using metrics such as the Average Annual Loss (AAL) or the 100 year return period loss. For planning purposes, it is useful to understand both average annual losses as well as possible losses from extreme events.

The Mean Estimate (Table 3) suggests increases in future losses as compared to the baseline. Larger increases in losses are projected for lower frequency events (> 50 year RPs - Figure 4).

Future projections indicate that, by end-of-century, losses from a 50-year return period event will increase by 9.2%, while the worst case climate change scenario suggests an increase in losses of 59.1% (Table 2).

Generally, larger increases in losses occur for buildings and infrastructure while smaller decreases are observed for crops, across different return periods (Table 3). The proportion of the population affected by end-of-century tropical cyclone risk increases compared to the current climate.

The main contributor to total losses to buildings and infrastructure is wind, with only minor contributions from storm surge and flood. There are reported changes in the storm surge and flood contributions to total loss (Figure 5) for the future climate. Similar to the current climate, the wind hazard remains the main contributor to the future loss for both assets.

The end-of-century Mean Estimate projects slightly stronger winds compared to the current climate

(Figure 6). The current climate general wind hazard patterns are maintained across the country.

Models from both the CMIP3 and CMIP5 global climate model runs were analysed in this project. The CMIP5 models demonstrated greater skill and performance in replicating current climate conditions, and reporting of damage and loss has therefore focused on results from the CMIP5 framework.

There is consistent divergence in the resulting EP-curves for individual models under the same framework (Figure 3) indicative of significant model uncertainty. The mean changes in future losses compared to the baseline are too small to be considered statistically significant when measured against the range of model estimates.

There is also the uncertainty associated with the risk model itself that needs to be accounted for. A statistical quantification of the uncertainty around each estimated EP-curve reveals that the separation between the baseline and the future projection is not large enough to be considered statistically significant.

APPENDIX

Classification of tropical cyclones

A tropical cyclone represents an atmospheric low-pressure system with a spiral arrangement of thunderstorms that produce strong winds and heavy rain. The table below describes the categorisation of storms based on maximum sustained winds and minimum central pressure as used in this study.

Classification	1-minute sustained wind speed (km/h)	Minimum central pressure (hPa)
Tropical Depression (TD)	<= 62	>= 1005
Tropical storm (TS)	63-118	1005-995
Category 1 (TC1)	119-153	995-980
Category 2 (TC2)	154-177	980-965
Category 3 (TC3)	178-208	965-945
Category 4 (TC4)	209-251	945-920
Category 5 (TC5)	>= 252	< 920

Definition of key metrics used to describe future risk changes

Several key metrics are utilised in order to evaluate the change in losses/risk between the current climate and the future climate: Average Annual Loss (AAL), Return Period (RP) Loss, Exceedance Probability (EP) curve.

- Average Annual Loss (AAL). AAL represents the sum of all losses observed in the domain divided by all realisations of next-year activity (10,000 years); AAL thus refers to the average loss that can be expected to occur per year.
- Return period (RP) loss. The X-year return period loss is the loss that can be expected to occur or be exceeded on average once every X years. Highlighted for this analysis are the 50 year (2.0% exceedance probability), 100 year (1.0% exceedance probability) and 250 year (0.4% exceedance probability).
- Exceedance Probability curve (EP-curve). An EP-curve represents the probability curve that various levels of loss will be exceeded. By inverting the exceedance probability to obtain corresponding return periods, the EP-curve then represents the various levels of loss associated with different return period events. An EP-curve is obtained by sorting all losses largest to smallest observed over a domain, assigning a rank to all entries (1 being the largest loss, 2 being the second largest loss etc.), and then dividing the ranking by the total number of years (10,000).

Loss and damage

The 'losses' referred to in this report represent the 'damages'; (i.e., the direct ground up-losses before the application of insurance (zero deductible)), plus an estimation of the emergency losses (i.e., debris removal, setting up shelters for those made homeless, or supplying medicine and food). All estimates of current and future losses in this report are in 2010 dollars.

COUNTRY RISK PROFILE: FEDERATED STATES OF MICRONESIA



Australian Government



With financial support from the European Union
In the framework of the ACP-EU Natural Disaster Risk Reduction Program
managed by the GFDRR

